



MONTHLY MEMBERSHIP PROGRESS REPORT

District 26 M1

Results as of: 3/31/2015

GMT: HAL GRIFFIN

LOCATION MISSOURI

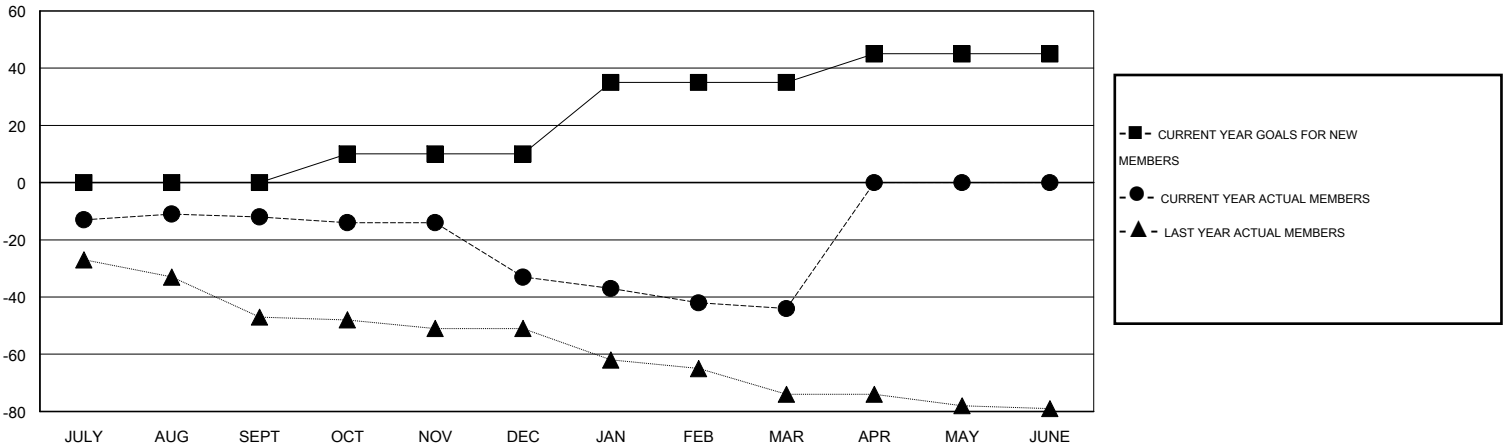
GMT CA 1

Clubs					Members				
RESULTS FOR 2014-2015					RESULTS FOR 2014-2015				
QUARTER	NEW CLUB GOAL	NEW CLUBS	DROPPED CLUBS	NET GAIN/LOSS	QUARTER	NEW MEMBER GOAL	CHARTER AND NEW MEMBERS ADDED	DROPPED MEMBERS	NET GAIN/LOSS
JULY/AUG/SEPT	0	0	0	0	JULY/AUG/SEPT	0	39	51	-12
OCT/NOV/DEC	0	0	2	-2	OCT/NOV/DEC	10	12	33	-21
JAN/FEB/MAR	1	0	0	0	JAN/FEB/MAR	25	24	35	-11
APR/MAY/JUNE	0	0	0	0	APR/MAY/JUNE	10	0	0	0

GOALS AND ACTUAL NEW CLUBS CUMULATIVE



GOALS AND ACTUAL MEMBERS CUMULATIVE



DROPPED CLUBS: 2	26 CLUBS OF 46 ADDED 1 OR MORE NEW MEMBERS	GENDER DISTRIBUTION
		MALE 915 (77.94%)
		FEMALE 259 (22.06%)
DROPPED MEMBERS	CLICK HERE FOR HEALTH ASSESSMENT DATA	FAMILY UNIT MEMBERS 167
DECEASED 11		HEAD OF HOUSEHOLD 83
CLUB CANCELLED 23		NON-HEAD OF HOUSEHOLD 84
OTHER 85		
TOTAL 119		